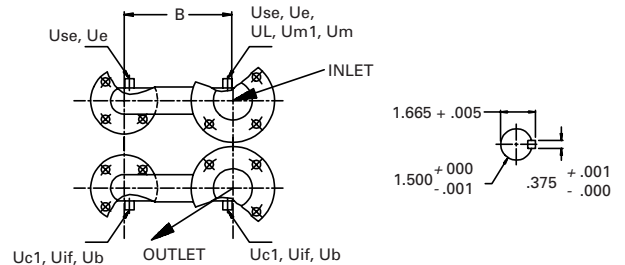
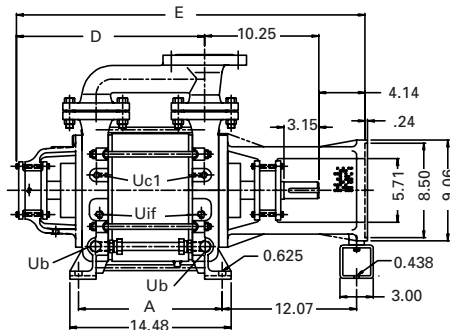
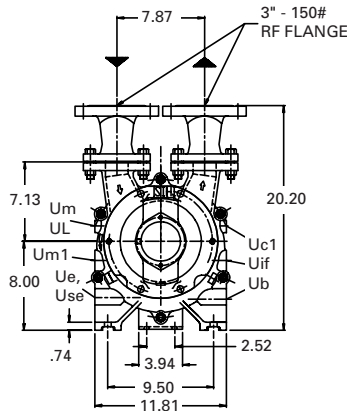


Dimensions (inches)

PUMP MODEL	A	B	C	D	E
LEH 360	12.91	9.76	14.48	16.91	31.30
LEH 460	15.04	11.89	16.61	19.04	33.43

For connection sizes/ratings and motor sizes refer to engineering data table on reverse.

For baseplate mounting, please obtain factory certified dimensions.



NOTE: Shown with optional C flange pedestal.  
Service Liquid is supplied to only one of the U<sub>b</sub> connections.

Capacity Table

Pump Model - LEH 360														
Speed (RPM)	6" Hg V. 608 Torr		12" Hg V. 455 Torr		18" Hg V. 303 Torr		22" Hg V. 201 Torr		24" Hg V. 150 Torr		28" Hg V. 49 Torr		28.9" Hg V. 25 Torr	
	acfm	HP	acfm	HP	acfm	HP	acfm	HP	acfm	HP	acfm	HP	acfm	HP
1750	212	12.5	220	14.0	220	14.7	217	14.6	215	14.4	158	11.9	75.5	10.8
1450	172	8.8	174	9.2	172	10.8	168	10.8	164	10.8	108	8.8	67	7.6
Pump Model - LEH 460														
1750	294	18.0	300	19.7	305	19.8	297	19.3	290	18.5	219	14.5	135	13.2
1450	258	11.6	256	11.6	251	14.0	245	14.0	245	13.6	180	10.0	130	9.2

This data represents average values for pumps in standard materials. Capacity in actual cubic feet per minute at 68°F (20°C) using 60°F (15°C) water as a service liquid. Vacuum in inches Hg. Barometric pressure at sea level 29.92" Hg abs. (760 Torr).

All performance data per HEI standards; subject to SIHI standard tolerances.

All data subject to change without notice.

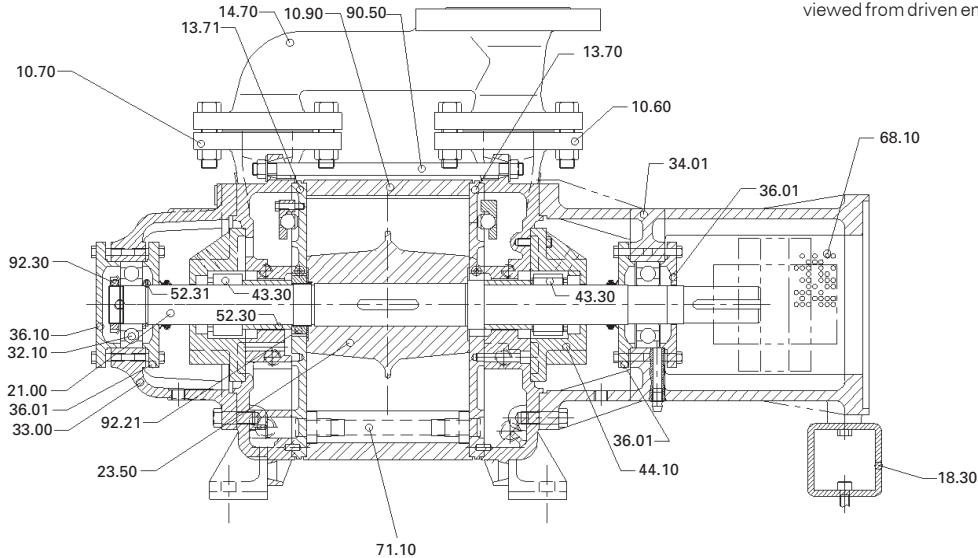


ENGINEERING DATA

PUMP MODEL	LEH 360	LEH 460
Gas Conn. Size/Rating (U)	3"/150 RF	3"/150 RF
Service Liq. Line Size/Rating (U <sub>B</sub> )	¾" /NPT	¾" /NPT
5) Cont. Drain Size/Rating (U <sub>se</sub> )	½" /NPT	½" /NPT
Motor (@ 1750 RPM) HP	15	20
Base Pump Wt. (lb.)	332	368
4) Direct Drive Assembly (lb.)	580	702
6) Min. V-Belt Sheave Dia.	7.9"	7.9"
Separator Model - WSS	2½"	3"
Separator Size - Recirc. (Gal.)	40	40
1/2) Norm. Max. Gas Temp. (°F)	248	248
2) Max. Service Liq. Temp. (°F)	176	176
3) Sound Level @ 27.5" HgV (dBA)	66	67
Moment of Inertia Wr <sup>2</sup> (lb. ft <sup>2</sup> )	3.09	4.51
Casing Max. WP / Hydro (psi)	30/45	30/45

- 1) Max. gas temperature with saturated gases.
- 2) Higher temperatures possible on request.
- 3) At 3 ft., 1750 RPM with motor (not certified).
- 4) Direct drive assembly includes pump, pedestal, coupling, guard and motor.
- 5) Use only one connection.
- 6) Special pump bearings required for V-belt applications.

SECTIONAL



\*Standard rotation "AB"(clockwise) viewed from driven end.

PARTS LIST

10.60 Cover - Driven End	18.30 Pedestal Foot	36.01 Bearing Cover	68.10 Coupling Guard
10.70 Cover - Non-Driven End	21.00 Shaft	36.10 Bearing Retainer	71.10 Service Liquid Line
10.90 Centerbody	23.50 Impeller	43.30 Mechanical Seal	90.50 Tie Bolt Assembly
13.70 Intermediate Plate	32.10 Bearing	44.10 Seal Housing	92.21 ImpellerNut
13.71 Intermediate Plate	33.00 Bearing Housing	52.30 Seal Spacer	92.30 Bearing Nut
14.70 Manifold	* 34.01 Pedestal	52.31 Bearing Spacer	

\* If pump was purchased with a driven-end bearing housing instead of a pedestal, then item 34.01 is replaced with item 33.00, and items 18.30, 68.10, 90.15, 90.16, and 91.49 are not included.

MATERIALS

ITEM	OA	OE	4B
Casing- Wetted	Cast Iron	Cast Iron	316 SS
Intermediates	Cast Iron	Cast Iron	316 SS
Impeller	Bronze	316 SS	316 SS
Shaft	431 SS	431 SS	316 SS
Shaft Sleeves	N/A	N/A	N/A
Shaft Sealing	AAA <sup>7</sup>	AAA <sup>7</sup>	AAB <sup>8</sup>
Casing- Non Wetted	Cast Iron	Cast Iron	Cast Iron

<sup>7</sup> AAA =single bellows seal with buna elastomers, carbon vs ceramic faces <sup>8</sup>AAB =single bellows seal with viton elastomers, carbon vs SiC faces

SERVICE LIQUID RATES

PUMP MODEL- LEH 360															
Pump Speed	12" Hg 455 Torr			16" Hg 354 Torr			20" Hg 252 Torr			24" Hg 150 Torr			28.9" Hg 25 Torr		
	A	B	C	A	B	C	A	B	C	A	B	C	A	B	C
1750		3.1	2.2		3.6	2.4		4.0	2.6		4.2	2.7		3.9	2.3
1450	5.5	2.5	1.6	7.0	3.1	2.0	8.5	3.3	2.1	10	3.5	2.2	13	3.0	1.7

PUMP MODEL- LEH 460															
Pump Speed	12" Hg 455 Torr			16" Hg 354 Torr			20" Hg 252 Torr			24" Hg 150 Torr			28.9" Hg 25 Torr		
	A	B	C	A	B	C	A	B	C	A	B	C	A	B	C
1750		3.6	2.6		4.1	2.9		4.6	3.2		4.8	3.1		4.4	2.7
1450	5.5	2.8	1.9	7.0	3.5	2.3	8.5	3.9	2.6	10	4.1	2.5	13	3.4	2.0

Column 'A' is the flow in USGPM required - once through.  
 Column 'B' is the make-up flow required when make-up water is 5°C (9°F) cooler than service water.  
 Column 'C' is the make-up flow when make-up water is 10°C (18°F) cooler than service water.

