

Improved Performance for your Compressed Air and Gas System.

DESCRIPTION

PSS Mechanical Separators are designed to remove liquids from compressed air or gas, at flow rates to 16,000 scfm (25718 nm³/hr.), with maximum temperature and pressure of 150°F (65.6°C) and 200 psig (13.6 bar g).

APPLICATIONS

PSS Separators use centrifugal and direct interception methods to remove entrained liquids from a compressed air or gas system.

Used in conjunction with an air or water cooled aftercooler, the PSS removes over 90% of the condensed liquid.

The PSS is also used to remove water droplets and large particulates where only gross contaminant removal is required.

FEATURES AND BENEFITS

- High efficiency design to provide optimum removal under a wide range of flow conditions.
- Lightweight cast construction for long dependable service.
- Low pressure drop for economical operation.
- Large drain port to prevent blockage.
- NPT connections for easy installation of a PDV Automatic Drain Valve.
- Corrosion resistant epoxy internal and external coating for maximum protection and long life.
- In-line T design to facilitate installation.

MODEL PSS 100

- Rugged cast zinc housings are light but highly resistant to external damage.
- Equipped with quick disconnect bowl mounting for easy service.

MODELS PSS 200 THROUGH 1700

- Sturdy lightweight aluminum construction for resistance to external damage.
- Sight glass to allow visual check of automatic drain valve effectiveness. (Models 200-300 only)
- Bottom mounted pressure relief valve to facilitate servicing.
- Threaded coupling between bowl and head for easy access.
- External and internal epoxy finish for maximum corrosion protection.
- Bottom drop-away bowl removal for ease of cleaning and service.

MODELS PSS 2600 THROUGH 16000

- Heavy duty carbon steel construction for long service life.
- No moving parts for a minimum of maintenance.
- Lowest ΔP of any type of mechanical separator for reduced energy costs.
- Designed for large liquid load with minimum reintraintment.



PNEUMATIC PRODUCTS

Mechanical Separators 11-16000 scfm (18-25718 nm³/hr.)

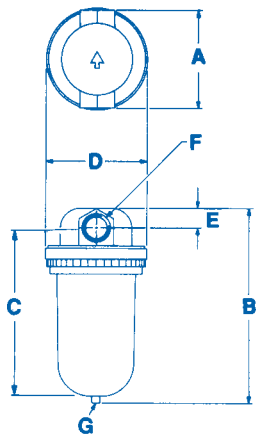


PSS 100-1700

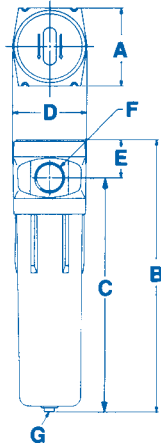


PSS 2600-16000

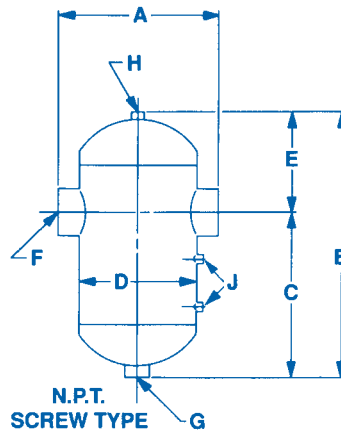
DIMENSIONS & WEIGHTS



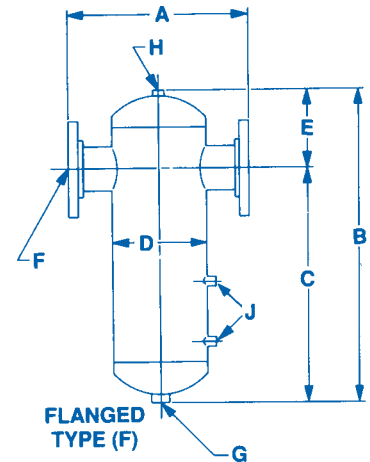
MODEL PSS 100



MODELS PSS 200-1700



N.P.T. SCREW TYPE



FLANGED TYPE (F)

MODELS PSS 2600-16000

MODEL	MAX SCFM (nm ³ /hr)	A WIDTH OVER CONNS. in (cm)	B TOTAL LENGTH in (cm)	C CONN. CNTR TO BASE in (cm)	D DIAM. OF BODY in (cm)	E CONN. CNTR TO TOP in (cm)	F AIR CONNECT SIZE in (cm)	G DRAIN PORT NPT in (cm)	H BLEED PORT NPT in (cm)	J OPT. PORTS NPT in (cm)	WGT. OF UNIT lb (kg)
PSS-100	100 (161)	4.62 (11.7)	10.00 (25.4)	9.00 (22.9)	4.75 (12.1)	1.00 (2.5)	1.00 NPT (2.5)	0.25 (0.635)	N/A	N/A	6.00 (2.7)
PSS-200	200 (321)	4.7 (11.9)	12.10 (30.7)	9.80 (24.9)	4.38 (11.1)	2.30 (5.8)	1.00 NPT (2.5)	0.25 (0.635)	N/A	N/A	5.30 (2.4)
PSS-300	300 (482)	4.7 (11.9)	16.10 (40.9)	13.80 (35)	4.38 (11.1)	2.3 (5.8)	1.50 NPT (3.8)	0.25 (0.635)	N/A	N/A	6.00 (2.7)
PSS-600	600 (964)	6.25 (5.9)	18.60 (47.2)	16.00 (40.6)	6.00 (15.2)	2.60 (6.6)	2.00 NPT (5.1)	0.50 (1.27)	N/A	N/A	13.00 (5.9)
PSS-1700	1700 (2732)	8.00 (20.3)	23.00 (58.4)	20.00 (50.8)	6.00 (15.2)	3.00 (7.6)	3.00 NPT (7.6)	0.5 (1.3)	N/A	N/A	35.00 (15.9)
PSS-2600	2600 (4179)	13.75 (34.9)	30.50 (77.47)	23.25 (59.1)	6.63 (16.8)	7.25 (18.4)	4.00 NPT (10.2)	0.75 (1.9)	0.50 (1.27)	5.75 (14.6)	85.00 (39)
PSS-2600F*	2600 (4179)	16.75 (42.5)	30.00 (76.2)	22.50 (57.2)	8.63 (21.9)	7.50 (19.1)	4.00 FLG (10.2)	1.00 (2.5)	0.50 (1.27)	5.75 (14.6)	110.0 (50)
PSS-4000F*	4000 (6430)	20.75 (52.7)	35.00 (88.9)	25.50 (64.8)	10.75 (27.3)	9.50 (24.1)	5.00 FLG (12.7)	1.00 (2.5)	0.75 (1.9)	7.87 (20)	135.0 (61)
PSS-5900F*	5900 (9484)	22.00 (55.9)	41.75 (106)	32.25 (81.9)	10.75 (27.3)	9.50 (24.1)	6.00 FLG (15.2)	1.00 (2.5)	0.75 (1.9)	7.87 (20)	160.0 (73)
PSS-10000F*	10000 (16074)	26.00 (66)	48.00 (122)	36.00 (91.4)	12.00 (30.5)	12.00 (30.5)	8.00 FLG (20.3)	1.25 (3.2)	0.75 (1.9)	7.87 (20)	250.0 (113)
PSS-16000F*	16000 (25718)	30.00 (76.2)	60.00 (152)	47.50 (120.7)	14.00 (35.6)	12.50 (31.8)	10.00 FLG (25.4)	1.50 (3.8)	1.00 (2.5)	7.87 (20)	354.0 (161)

*F denotes flanged

NOMENCLATURE

The model number reflects the maximum flow rate for the separator in scfm. For example, the PSS-2600 has a maximum flow rate of 2600 scfm (4179 nm³/hr.). (To determine nm³/hr. multiply scfm by 1.6074.)

Because of our policy of continuous improvement, some information, specifications and dimensions contained herein may be revised. For confirmed accuracy, always refer to factory submittals.

DISTRIBUTED BY:



PNEUMATIC PRODUCTS

A United Dominion Company