

V-Series (Vacuum) Vertical Blender Specifications and Dimensions

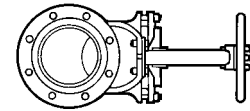
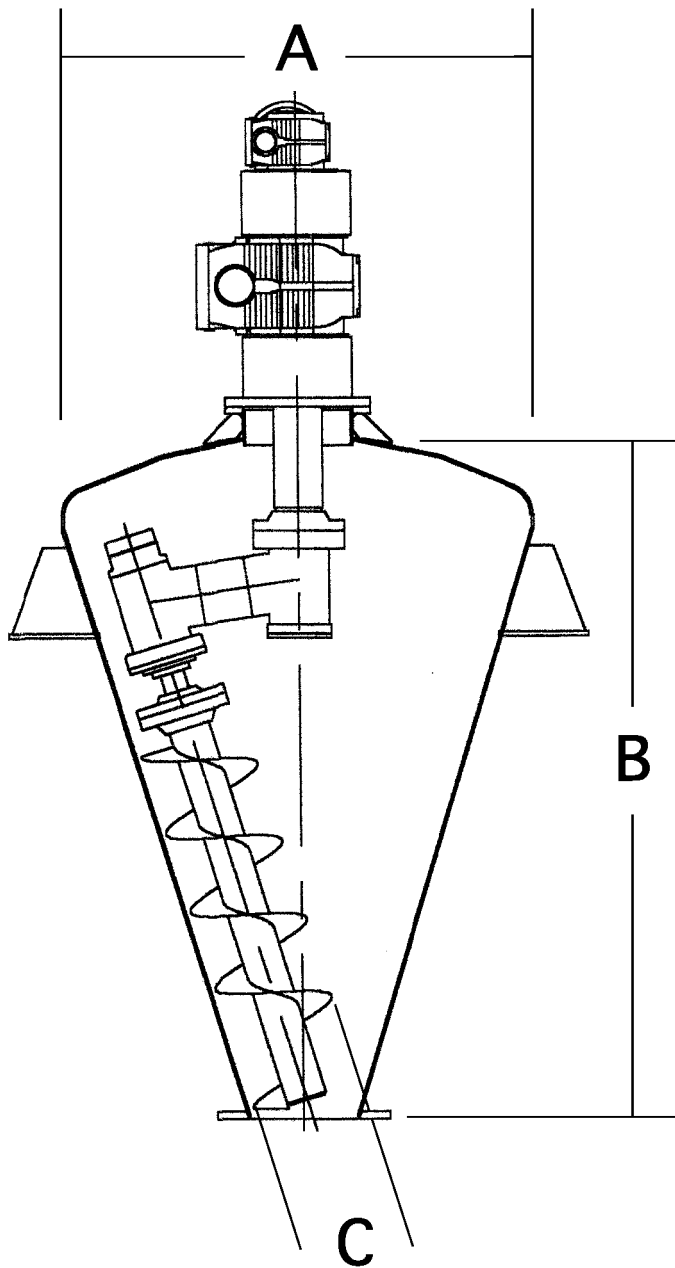
STANDARD FEATURES:

- 1 through 500 cubic feet capacity
- Stainless steel type 304 wetted parts
- Designed for vacuum operation
- Manways for charging of raw materials
- Flange for discharge valve
- Sandblasted finish on exterior, 80 grit finish on interior surfaces
- All exterior non-stainless surfaces are painted with a white two-part epoxy
- 230/460 volt, 60 Hz, three phase, explosion-proof motors (see options for starters and controls)
- Single speed screw and orbital arm drives
- Unsupported mixing screw
- Start under full load
- Support brackets for through the floor mounting or legs for floor mounting

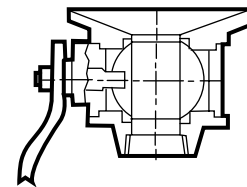
OPTIONAL FEATURES:

- Wetted parts of carbon steel, stainless steel 316 or special alloys
- Atmospheric or internal pressure construction
- Sanitary type construction
- Openings as required
- Split and hinged cones for special applications
- Side access and clean-out ports
- Spherical, Flush Type Ball and Knife gate discharge valves
- TEFC motors and controls
- Controls such as variable frequency drives, motor starters, and operator stations are available
- Spray nozzles for liquid introduction
- Lumpbreakers for solids or agglomerates size reduction
- Dimpled or baffled jackets for heating or cooling
- Thermocouples for temperature readout
- Special gasket materials such as Viton are available

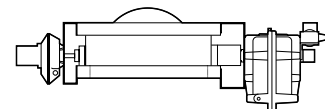
V-Series (Vacuum) Vertical Blender Specifications and Dimensions



Optional Slide Gate Valve – ideal for dust-tight, liquid-tight, or vacuum-tight operation.



Optional Ball Valve – For vacuum/pressure blending or liquid/ solid blending.



Optional Spherical Valve – pneumatically operated, this valve minimizes dead space and provides a large discharge opening.

Model	Working Cap Cubic Feet	A Upper Cone Diameter	B Cone Height	C Screw Diameter	Screw HP	Swing Arm HP	Screw RPM	Swing Arm RPM
V-1*	1	22	29	4	1/2	1/3	100	2.5
V-10	10	48	70	12	3	1	66	1.5
V-32	32	60	91	12	5	1	60	1.5
V-64	64	72	113	12	7 1/2	1 1/2	60	1.5
V-120	120	84	134	12	10	1 1/2	60	1.5
V-200	200	96	153	14	10	1 1/2	60	0.8
V-300	300	108	174	14	15	1 1/2	62	0.8
V-400	400	120	196	14	15	1 1/2	62	0.8
V-500	500	132	218	14	20	1 1/2	62	0.8

* See Specification Sheet VBL-12-00